



London's Arcadia – External Consultation procedure

All schemes have been subject to stage 1 'in principle' consultation in 2003/4. This procedure relates to the detailed design *and approximate timing of works*.

Order of consultation by external consultee

Professionals not represented on the Arcadia Executive committee (eg , PLA, Bus Operators, Police, RAID, TfL)

Letter and plan(s) with offer to meet, preferably on site
For written comments and in principle approval
If design changes necessary then these should be made before going to next stage.



Ward Councillors

Letter and plan(s) with offer to meet, preferably on site



Local Stakeholders eg amenity groups, schools

Letter and plan(s) with offer to meet, preferably on site



Local interested persons

Letter and link to plan(s) availability ie website, library and Council atrium.
Date of meeting.



Methods of informing and consulting scheme with general public

Drop in sessions with staffed exhibition panels
Village based public notice in local press
On-site signs – use of artists impression or maps
London's Arcadia website
Explanatory leaflet and feedback form

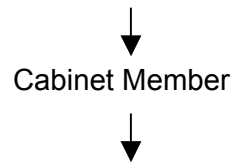


Report of consultation findings – by Project Manager



Present findings to London's Arcadia Executive Committee

London's Arcadia Executive Committee has the final say if any controversial issues arise in consultation on design and schedule



Feedback on decisions and timings of works to all consultees via London's Arcadia website
and paper copies in appropriate libraries

Proposed timing of upcoming consultations stage 2 - 2006/07

Ham (Autumn/Winter 06)

Twickenham (Winter/Spring 07)

Approved 18.10.06 following the London's Arcadia Executive Committee meeting Friday 13th
October.